



NEW ENGINEERS
FOR A CHANGING WORLD



NMITE Progress Report: 2021

Contents

4 Meet the Senior Team

6 Becoming NMITE

10 Welcoming the Pioneer Cohort

16 Becoming an exemplar in engineering education

24 Working with Partners

29 Focus on Skylon

31 Reaching the wider community

39 Transformative giving

45 Looking forward



Meet the Senior Team



Professor Elena Rodriguez-Falcon

Chief Executive Officer
Joined February 2018



Professor Beverley Gibbs

Chief Academic Officer
Joined April 2020



James Newby

Chief Operating Officer
Joined April 2020

A message from the Chief Executive

I am delighted to introduce NMITE's third Annual Progress Report. Those of you who have read our previous reports will notice a key difference: We no longer use the term future learners. Our learners are here, right now, and their arrival opens a new chapter in NMITE's decade-long history.

That we have reached this stage is a significant achievement. NMITE offers a radical alternative to traditional pedagogical approaches to engineering, and with the arrival of our Pioneer and Explorer Cohorts we can finally see our new model in action.

I have watched with deep pride over the past three months as each of our Pioneers has demonstrated the passion, curiosity, courage and grit that we had hoped to see in NMITE engineers. In the following pages you will see a snapshot of their journey so far, and I know you will share in my pride.

Of course, our Pioneer Cohort, and each cohort that follows them, will walk a path that has been paved for them by a community of dedicated individuals and organisations. This report celebrates those who have given something of themselves to bring NMITE to life: the courageous staff who have left established careers, the volunteers, ambassadors and organisations who have given countless hours of their time; the donors who have gifted their hard-earned money; the friends who have shown unbelievable and unwavering commitment.

If you are reading this now, you belong to this community, and I thank you.

With my warmest regards,

Professor Elena Rodriguez-Falcon FIET, PFHEA, FCMI
President & CEO

"Our learners are here, right now, and their arrival opens a new chapter in NMITE's decade-long history."



Becoming NMITE



“You won’t come here to study about engineering, you will come here to learn to be an engineer”

***Professor Elena Rodriguez- Falcon
FIET, PFHEA, FCMl
President & CEO***

From paper to Pioneers

In 2007 the idea of a “university project” in Hereford was conceived.
15 years later, NMITE is open for business.

2007

Jesse Norman, then parliamentary candidate, meets David Sheppard, then branch chairman of Penyard Conservatives, to discuss a university in Hereford.

2011

Jesse Norman, Karen Usher and David Sheppard commit to leading and driving forward the university project. Fundraising, consultations and campaigning begin in earnest with support from an army of volunteers.

2013

The name “NMiTE” (New Model in Technology and Engineering) is formally recognised.

2017

NMiTE awarded grant of £8m from Marches Local Enterprise Partnership. A further £1.1m raised through the Founders Fund.

Submission of “Green Book” to Department of Education, putting forward NMiTE’s business and economic plan.

2018

NMiTE awarded grant of £15m from Department for Education. NMiTE team grows to 20 employees.

Arrival of Design Cohort.

Inauguration of NMiTE.

Professor Elena Rodriguez Falcon becomes President and Chief Executive.

2019

Work continues to validate NMiTE as a New Provider of Higher Education.

Departure of Design Cohort.

2020

NMiTE is rebranded as NMITE (New Model Institute for Technology and Engineering).

NMITE is listed as a New Provider of Higher Education on the Office for Students’ Register.

NMITE’s Master’s Degree in Integrated Engineering is validated by the Open University.

Completion of Blackfriars campus with funding from Marches LEP.

2021

Arrival of NMITE’s first undergraduate engineers:
The Pioneer Cohort.

Source: Goodhew, P, “Idea to Inauguration: Founding a University in the UK”, 2019.



Welcoming the Pioneer Cohort



Welcoming the Pioneer Cohort

The highlight of the year was undoubtedly welcoming our first undergraduate engineers to NMITE. Their arrival marked the culmination of over a decade of preparation, fundraising, lobbying and commitment from dozens of individuals and organisations.

Meet the team: Student & Registry Services



Mary Kenyon-James
Head of Student Experience
Joined February 2020



Mark Fisher
Student Support Manager
Joined April 2021



Emma Lewis
Quality Assurance Manager
Joined April 2021



Michaela Dubravcova
Academic Registrar
Joined January 2022

Meet the team: Marketing & Student Recruitment



Rachel Carr
Marketing and Communications Lead
Joined November 2020



Lauren Fosterjohn
Communications Associate
Joined June 2019



Olivia Parry
Marketing Associate (Creative)
Joined August 2019

Welcome week

The Pioneers were launched into life and learning in Hereford with a jam-packed welcome week hosted by NMITE and local businesses, including Bastion, De Koffie Pot, the Burger Shop, Whitecross Racket Club and Yeleni. Activities included ping pong, bowling, a quiz night and yoga.



“Without the bursary I received because of money raised through the Pioneer Fund, I would not have been able to afford to retrain as an engineer. I am grateful to all those who contributed, as they have given me the opportunity to change career direction.”

Finn Neate, Member of Pioneer Cohort

Getting the best start



Each member of the Pioneer Cohort received a significant bursary to offset the costs of their first year’s expenses, allowing them to focus on their studies without undue financial pressure. This compelling offer attracted a more diverse cohort and was only possible thanks to the generous individuals and organisations who donated to NMITE’s Pioneer Fund.

In addition to their bursaries, each learner was given a new laptop with all the necessary software pre-installed and ready to use. They also have access to the excellent counselling services provided by Yeleni Therapy & Support.

Learning and living

Thanks to £2.7m of funding from the Marches Local Enterprise Partnership we completed the intense renovation work at NMITE's Blackfriars Campus, the former Hereford High School for Boys.

The campus features seven purpose-built learning Studios, as well as breakout spaces, quiet study areas and a state-of-the-art engineering Factory. Learners also access our Academic Skills and Knowhow Centre, where they can further develop their professional and technical skills, and a library showcasing an impressive collection of books, materials, and engineering artefacts.



NMITE's friends and supporters enjoyed a behind-the-scenes tour of the new campus ahead of the arrival of the Pioneer Cohort

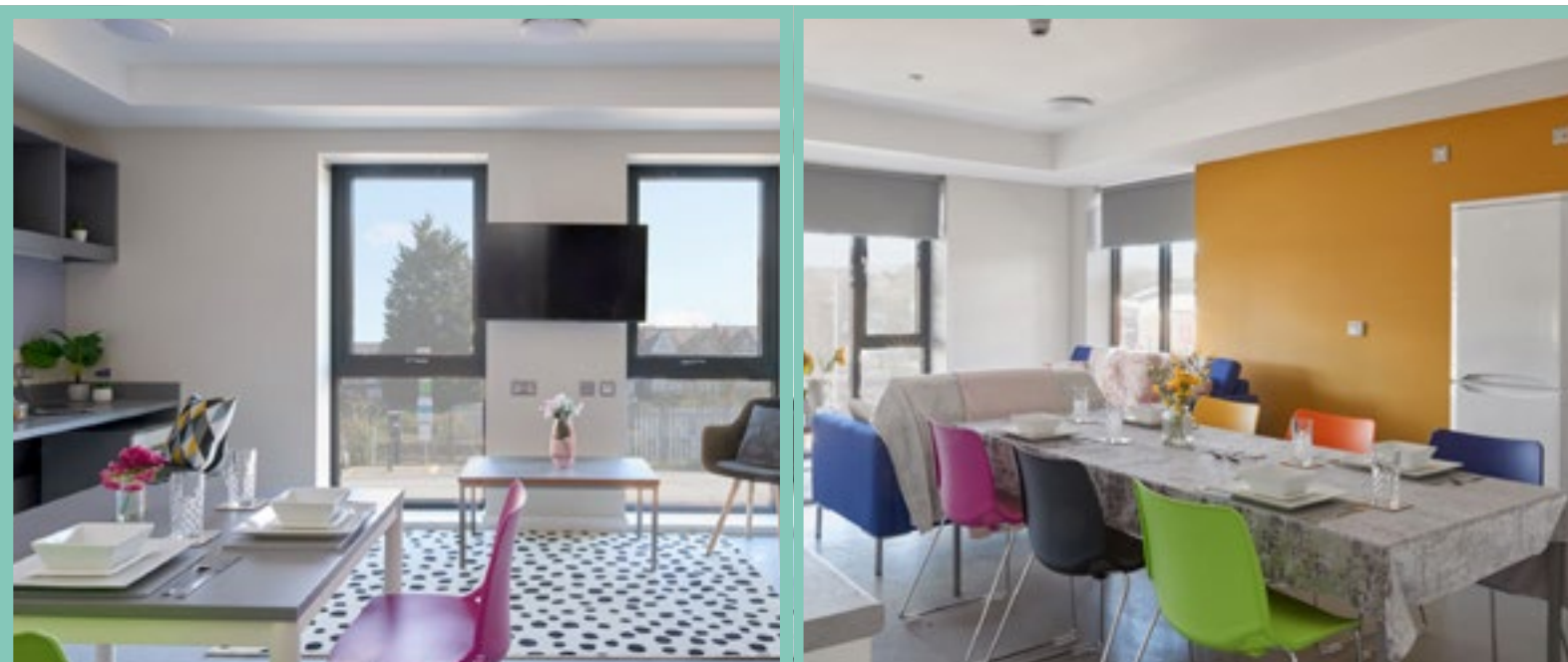
Three of our Blackfriars learning spaces have been named in recognition of support received from Global RadioData Communications, Hereford Contract Canning and Safeguard Medical.



Did you know?
You can explore our Blackfriars campus online:

[Click here to explore](#)

Outside the Studios our learners are settling in well to their accommodation at the newly opened Station Approach. The high spec accommodation, funded by Herefordshire Council, is managed by City Heart Living, and is shared by students at Hereford College of Arts.



From campus to community

Being on campus from 9am – 5pm hasn't stopped our learners from becoming enthusiastically involved in the community during evenings and weekends.

In November, three green-fingered volunteers spent a Saturday morning getting their hands dirty at the historic Blackfriars Rose Garden.



"Sam, Elise, and Alex worked hard and enthusiastically. They were great representatives of NMITE!"

Anne Harbour, coordinator of Friends of Blackfriars Rose Gardens

Several learners and staff members have been enjoying Wednesday evening activities hosted by St Peter's and St James' church, including board games and pizza evenings. A carol service and quiz night in December was well attended, with the house band featuring one of NMITE's learners.



"It's been great to see members of NMITE enjoying themselves and building connections with our local community as they've begun to settle into Hereford."

Revd Andy Dodwell, Associate Vicar, St Peter's and St James' Church



Becoming an exemplar in
engineering education



Becoming an exemplar in engineering education

NMITE may be a new institution, but we are already making a name for ourselves as an exemplar in our field. The numerous awards that have been received over the past year are a testimony of the team's commitment, creativity, and hard work.

Meet the team: Academic Faculty



Professor Gary Wood

Academic Director
Joined July 2021



Professor Dave Allan

Professor of Founding Faculty
Joined August 2018



Dr Aghlab Al-Attili

Associate Professor (CATT)



Tim Belden

Assistant Professor (CATT)
Joined January 2021



Dr Peter Broks

Associate Professor
Joined May 2021



Dr Costa Coleman

Assistant Professor
Joined July 2020



Dave Coleman

Senior Learning Resources Technician
Joined November 2018 - November 2021



Professor Peter Goodhew CBE FREng

Curriculum Advisor & Honorary Professor to
December 2021

NMITE in the news

NMITE has been raising its profile among the public and was the subject of numerous press features in 2021, including:

- A **front-page article in The Times** discussing the language used to describe engineers, which sparked a thought-provoking public conversation;
- A **feature on ITV Central**, where Peter Bearne spoke with Professor Elena Rodriguez-Falcon, academic staff and a member of the Pioneer Cohort;
- A showcase on BBC Midlands Today with Lindsay Doyle;
- A **conversation** between Toni MacDonald from BBC Hereford and Worcester and NMITE's Gabriele Tamagnone about the upcoming Skylon Park Campus;
- An **interview with Dame Kate Bingham**, former chair of the Covid Vaccine Task Force, on her previous role, the need for more women in engineering, and why she supports NMITE.



Individual awards and recognition

Professor Elena Rodriguez-Falcon was honoured with the IET's Gender Diversity Ambassador Award. In addition to her Award, Professor Rodriguez-Falcon was elected as a member of Advance HE's Strategic Advisory Group for Equality, Diversity and Inclusion. She also accepted a position as Chair of the Engineering Development Trust, an educational charity engaging young people through STEAM.

Dr Sarah Peers was appointed to the Engineering Professors' Council's Research, Innovation and Knowledge Transfer Committee.

Professor Dave Allan was recognised as a Fellow of the Institute of Leadership and Management.

Professor Helen Rogers was elected a Fellow of the Royal Meteorological Society.

Professor Rodriguez-Falcon and NMITE's HR Director, Samantha Lewis, were She Has No Limits Awards finalists.

Dr Pooh Ling E was appointed an Adjunct Professor at INTI, a private University in Malaysia.

Dr Nadia Kourra was accepted as a Committee Member for the British Standards Institute's Technical Product Realisation panel for X-ray Computer Tomography.

Professor Beverley Gibbs was appointed to the Engineering Professors' Council's Engineering Education, Employability and Skills Committee. She was also recognised as a Fellow of the Institution of Engineering and Technology.

Professor Sarah Hitt was recognised as a Senior Fellow of the Higher Education Academy.



Professor Robert Hairstans

CATT Director
Joined March 2021



Professor Sarah Hitt

Professor of Liberal Studies from June 2019 - November 2021; Visiting Professor from December 2021



Dr Nadia Kourra

Associate Professor
Joined April 2020



Dr Pooh Ling E

Associate Professor
Joined August 2019



Peter Metcalfe

Associate Professor
Joined June 2019



Dr Sarah Peers

Associate Professor
Joined May 2021



Dr Aris Quintana-Nedelcos

Assistant Professor
Joined May 2021



Ben Ricketts

Academic Partnerships Associate
Joined September 2019



Professor Helen Rogers

Professor and Head of Widening Participation
April 2017 - September 2021



Neil Rogers

Assistant Professor
July 2019 - October 2021



Dr Gabriele Tamagnone

Research Fellow (CATT)
Joined September 2021



Joseph Walters

Learning Facilitator
Joined January 2021

Institutional awards and recognition

Engineering ethics

On behalf of the Royal Academy of Engineering and the Engineering Professors Council, NMITE was awarded the opportunity to lead a project curating best practice case studies for the teaching of engineering ethics in Higher Education.

Emerging stronger

Our voice and expertise at NMITE are being drawn upon across the sector. The report “Emerging Stronger”, edited by Professor Beverley Gibbs and Professor Gary Wood, focused on the impact of COVID-19 on engineering education and was adopted by the Engineering Council, who are the UK regulatory body for the engineering profession, as guidance for accreditation teams in pandemic times. The report was also used by the Engineering Professors’ Council to inform their response to the Office for Students’ consultation on digital learning and teaching during the pandemic.

Thought leadership

More than 30 academic presentations, seminars, panels and workshops were given by NMITE’s academic staff, including:

- Professor Beverley Gibbs gave keynote addresses at the Royal Academy of Engineering’s Visiting Professor Scheme induction, and at the European Society for Engineering Education’s annual conference;
- Professor Gary Wood gave a keynote address at the UK & Ireland Engineering Education Research Network annual symposium;
- Professor Helen Rogers chaired the Royal Aeronautical Society’s conference ‘Mitigating the Climate Impact of Non-CO2 – Aviation’s Low Hanging Fruit’;
- Three of the academic team’s papers received publication in academic journals.

Engineering design

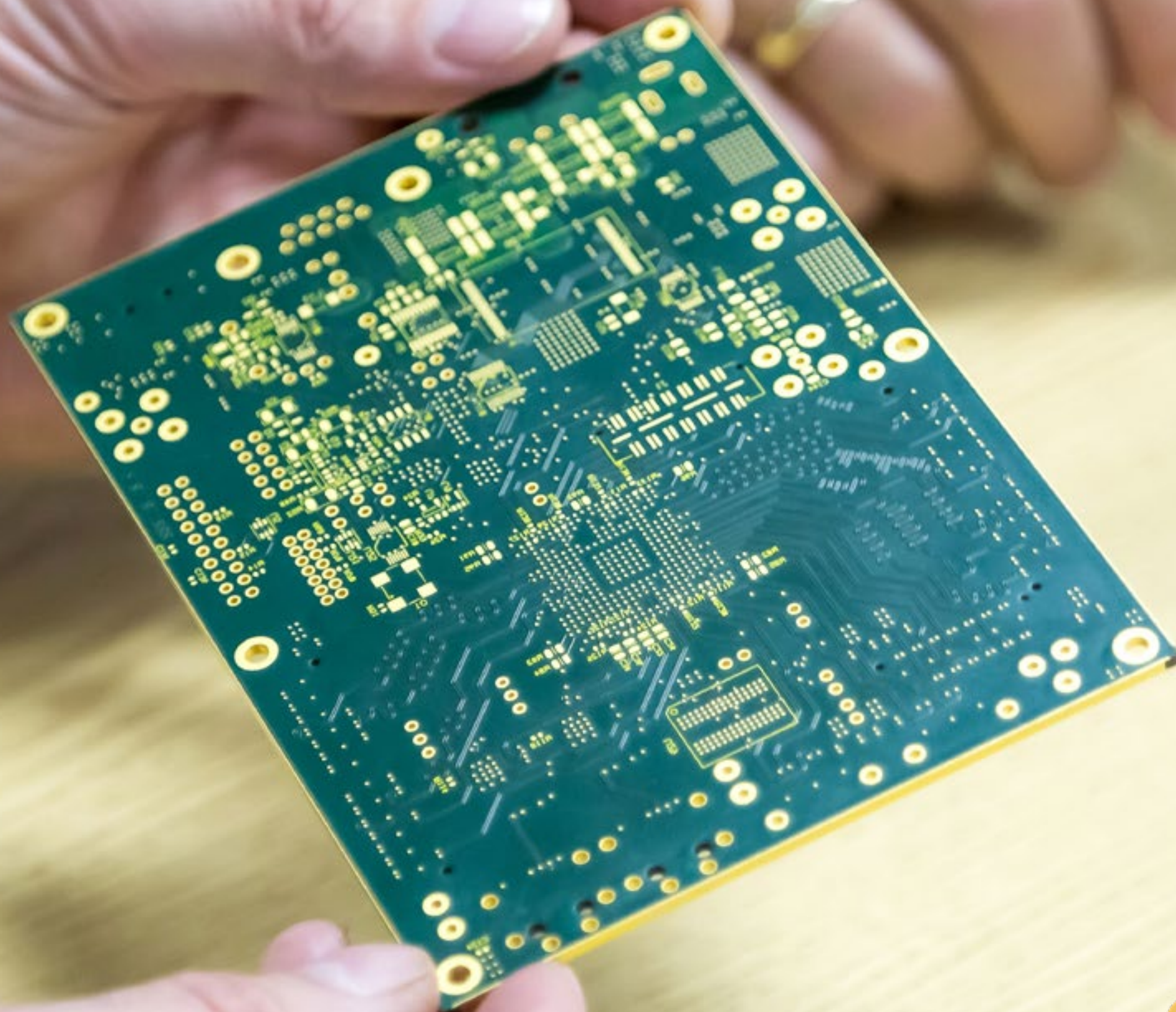
NMITE was awarded the Institution of Engineering Designer’s ‘Promotion of Design’ award for our commendable work in promoting engineering design to a wider audience.

Health and wellbeing

NMITE was the winner of the Health & Wellbeing in the Workplace Award at the Hereford and Worcester Chamber of Commerce Business Awards 2021.



Working with Partners



"To say I was concerned about the future of engineering would be an understatement, and NMITE's drive to bring engineers back into manufacturing is a huge relief. The enthusiasm from the students as we demonstrated what they could potentially be doing in the future was inspirational."

***Brandon Davies, Managing Director,
Numachine Ltd***

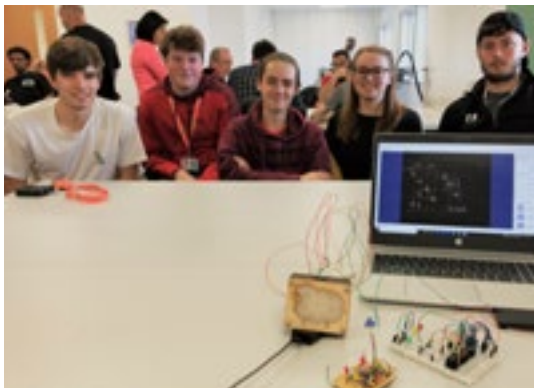
Working with Partners

NMITE has spent years building strong relationships with industry, and this year we have put our employer-led learning model into practice.

Real challenges, real engineers

At NMITE, real-world engineering happens from day one. Our learners have already tackled three engineering challenges set by employers with real-time requirements.

The first task was set by pioneering architectural practice, Studio Bark, as part of the Introduction to Electronics and Electrical Engineering module. The challenge was to build an electronic sensor detecting the moisture content of a wool-insulated timber-framed building.



For the Engineering Materials and Processes module, manufacturer Barrs Court Engineering asked the learners to identify a cost-effective material for a component of the company's biomass heating system.

The Programming module kicked off with a visit to Herefordshire Archive and Record Centre, where they were shown the new passivhaus archive storage facilities. Their challenge was to make large historical maps remotely accessible by creating high-resolution digital copies.



Out of the classroom, into the world

Learning at NMITE isn't confined to campus. Several of our Partners have hosted visits to their workplaces, giving our learners an insight into the real world of work.

A visit to family-run business Pearson Precision Toolmakers included a tour of their workshop, covering their design, programming, and manufacturing and moulding areas. Learners also visited world-leading radio frequency communications company ETL Systems, package manufacturing specialist KGD Enterprises, machining specialist Numachine and Herefordshire Archive and Record Centre.

Creative, confident, work-ready engineers

Our learners work with experts in both technical and non-technical industries so they can develop essential professional skills such as communication and project management.



We have established a strategic partnership with Ultrafilter Medical, a Ross-on-Wye manufacturer of medical face masks, who will offer project work and work experience placements to learners at both their UK and international sites.

"Our partnership with NMITE got off to a flying start when the students visited us in November, and they accepted the challenge we set them with a fizzing enthusiasm."

Rhys Griffiths, Senior Archivist, Herefordshire Archive and Record Centre

They received a tutorial on oracy from local consultancy Confident Communications and were introduced to the Internet of Things by the UK's authority on advanced digital technology, Digital Catapult. Shropshire-based LandScope Engineering demonstrated their advanced Ground-Penetrating Radar equipment, and Formus Pro, a business software consultancy, spoke to them about the nature of working in a programming environment.



It was great to have Oliver from LandScope on site. I am really interested in Civil Engineering, so it was massively up my street!

Kimberley Pickett, member of the Pioneer Cohort



Whether you're a small business, a large engineering firm, or a third-sector organisation, we want to work with you.

[Click here to find out more](#)

Focus on Skylon



Focus on Skylon

Construction work began on our much-anticipated Skylon Park Campus at the end of June 2021. The £7m project, which is funded by the Marches LEP through the Getting Building Fund and Local Growth Fund, will be home to the Centre of Advanced Timber Technology (CATT) and Centre for Automated Manufacturing (CAM). It is set to launch autumn 2022 and will deliver education and training in highly specialist areas of engineering.

The past year has seen enormous progress not only on the build, but in developing the essential partnerships needed to ensure the success and impact of the project.

A beacon for sustainability

The driver for the new campus is to progress the UK's sustainability agenda by delivering skills in both low-carbon construction and resource- and energy-efficient manufacturing.

The construction sector has a significant environmental footprint, and there is a shortfall of affordable, low carbon housing in the UK. The CATT will address this by championing timber as a sustainable, cost-effective building material through skills-building and partnerships. The CAM aims to deliver courses and consultancy to increase uptake in automated manufacturing, which can result in greater resource efficiency, lower costs and less waste within the industry.

The building at Skylon Park Campus itself will be an exemplar of sustainable construction. The 2500m² campus is being built by family-owned contractor Speller Metcalfe to high environmental and sustainability standards.



A partnership approach

Our aim is for the CATT and CAM to catalyse large -scale change. To do this, we have built high-quality partnerships with strategically aligned stakeholders to shape the distinctive UK offer.



Three of our Skylon Campus learning spaces have been named in recognition of Rothoblaas, AK Industries, and W H Doherty.

Professor Robert Hairstans was appointed to the role of Founding Director of the CATT as a secondment to his existing role within Edinburgh Napier University's (ENU) Institute for Sustainable Construction, fostering a mutually beneficial relationship between the two Institutions. To cement the relationship NMITE hosted six interns from ENU's Built Environment Exchange, who worked with NMITE, Timber Development UK (a recent merger of TRADA and Timber Trades Federation), ENU and Passivhaus Trust to design a UK-wide sustainable built environment design competition which will run early in 2022.



Read more about this about this on page 47!

NMITE is working closely with leading timber trade body, Timber Development UK (TDUK) to facilitate engagement with industry and academia. We have become a member of the TDUK Working Group Teaching Timber, a nationwide network of academics promoting timber engineering, and we are partnering with ENU and TDUK to create a Timber Technology Engineering and Design educational system.

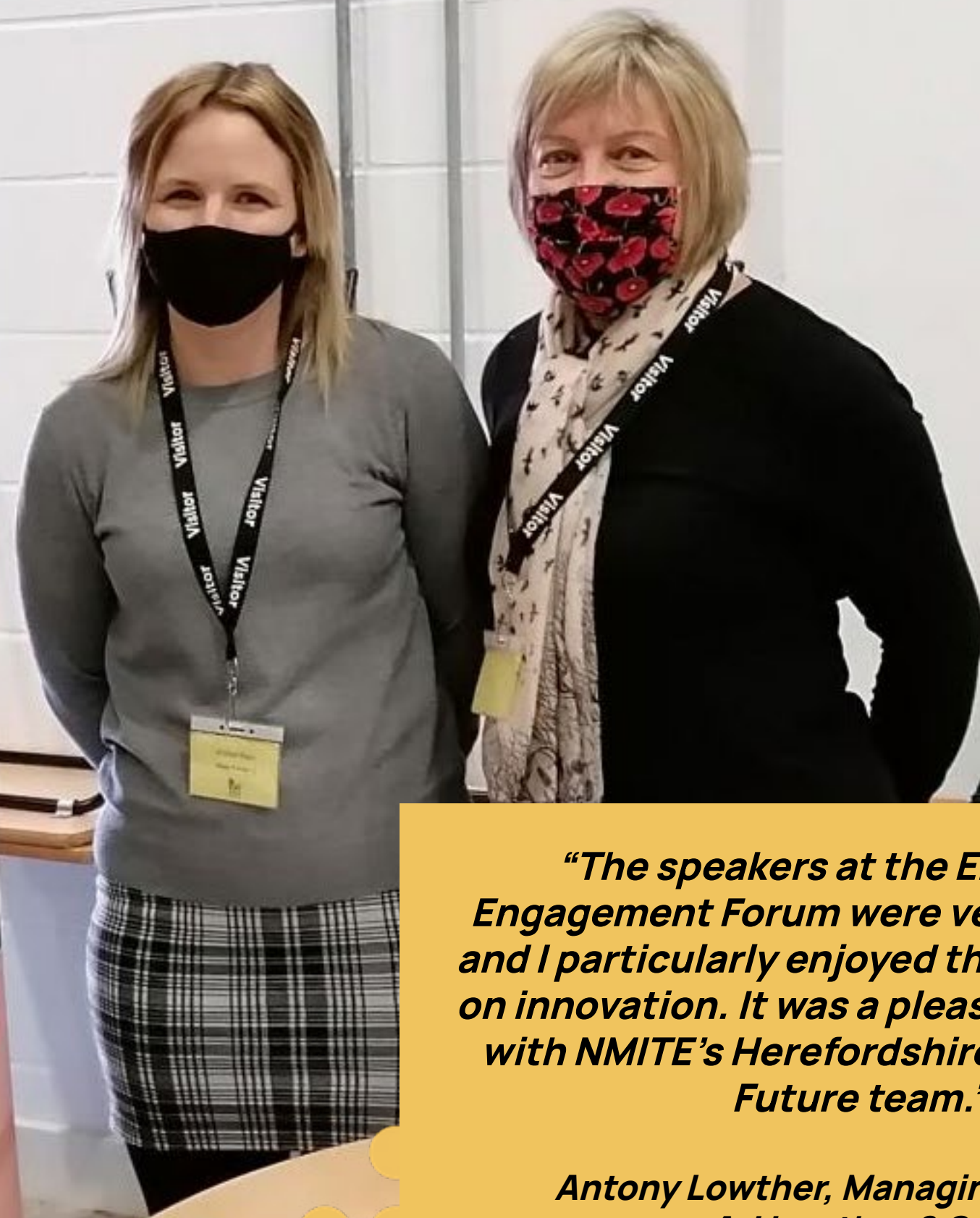
The campus itself will be implemented as a Living Lab, where the building functions as a collaborative teaching tool. Using advanced digital technology, including specialised CAD software donated by Dietrich's, it will become part of a wider ecosystem of built environment projects, facilitating knowledge exchange and an active engagement with industry.

Travelling further afield, members of the NMITE team attended COP26 in Glasgow. There they co-hosted the workshop 'Transforming Timber Technology' at the Wood for Good conference, bringing together universities, practitioners and industrials to consider educational needs for a sustainable built environment. Following the conference, CATT Learning Technician Joseph Walters spent a week at the Construction Scotland Innovation Centre to further support the Transforming Timber project.



Reaching the wider community

It's one idea, brilliantly engineered.



“The speakers at the Employers’ Engagement Forum were very interesting and I particularly enjoyed the presentation on innovation. It was a pleasure to connect with NMITE’s Herefordshire Skills for the Future team.”

***Antony Lowther, Managing Director,
A J Lowther & Son***

Reaching the wider community

NMITE is situated in the heart of Herefordshire, and we are proud that we can make a meaningful contribution to the county's vibrant community.

Meet the team: Herefordshire Skills for the Future



Anthea Parker

Head of Project Management Office
Joined June 2017



Matthew Brown

Recruitment and Events Specialist
Joined August 2021



Ian Chapman

Employer Engagement Associate
Joined November 2019



Thomas Moore

Partnerships Administrator
Joined June 2021



Lydia Stevens

Placement Coordinator
Joined June 2021



Megan Ward

Project Manager
Joined April 2021



David Williams

Enterprise Development Associate
Joined May 2021

Reaching the community locally...

In 2020 NMITE secured over £850,000 of funding from the European Social Fund to deliver the Herefordshire Skills for the Future (HSF) project in collaboration with Herefordshire Council. This three-year project, which was launched in the second half of 2021, aims to help bridge the gap between small businesses and the education sector, and develop enterprise skills amongst young people.



Over the past few months, the HSF team has been engaging with Herefordshire businesses and education providers, including:

- Assisting with the launch and initial staff recruitment of a new coffee shop in Hereford City Centre;
- Running an Enterprise and Entrepreneurship workshop for aspiring entrepreneurs at the Royal National College for the Blind;
- Creating a Work Experience Placement Directory for schools and colleges;
- Launching an Early Career Leadership Programme to help employers train their staff;
- Hosting Employer Engagement Forums to drive skills and innovation among Herefordshire SMEs.

Discover how you can take advantage of NMITE's skills offering:

[Click here to find out more](#)

"Our Year 12 Physicists at Hereford Cathedral School enjoyed a fascinating talk from Michelle Cantoni, Business Director of Level Peaks Associates. Our thanks go out to Michelle for an inspirational insight into her career and to NMITE who arranged such a wonderful opportunity as part of their Herefordshire Skills for the Future programme."

Caroline Hendry, Head of Physics, Hereford Cathedral School



As a Kickstart Gateway organisation we are proud to have provided help and support for young people in risk of long-term unemployment.

We helped 75 16- to 24-year-olds into employment through the scheme, including two additions to the NMITE Team.

We learnt from the DWP that our fill rates for the companies we have worked with have been exceptional, meaning that the number of open positions we filled with employees through the scheme has been significantly higher than average. We have also been able to network and build positive relationships with businesses throughout the UK.

Following the easing of lockdown restrictions we have ramped up our schools outreach activities once more, engaging young people in STEM and raising awareness of engineering as an accessible and rewarding career choice. Since May 2021 we have delivered ten key outreach activities, reaching over 300 school pupils from low-participation areas in Herefordshire.



Throughout late spring and summer we offered the 'Summer of Discovery', a programme of inspiring activities designed to engage the wider public with engineering issues. We hosted 16 online and in-person events, including seminars delivered by Professor Brian Cox and Paul Stein, Chief Technology Officer at Rolls Royce plc., an interview with Dame Kate Bingham, interactive workshops and a community Open House event. Over 500 people attended the Summer of Discovery and we received very positive feedback.



"The spirit of NMITE was embodied in the excellent Summer of Discovery presentation. Herefordshire is so fortunate to have such a wholesome approach to education."

Summer of Discovery participant

We continue to work closely with the veteran community as part of our commitment to enabling Lifelong Learning:

- In July we hosted our annual Military to Business Event, kindly sponsored by Kinetic Six, which showcased 40 veteran-owned businesses and promoted career pathways for those transitioning from the armed forces to civilian life.
- Over 30 military leavers have participated in NMITE's Continuing Professional Development courses.
- We are now a member of the WM RFCA Association, and we are ELCAS Accredited, meaning that military personnel can spend their learning credits with us.



...and globally

In partnership with University College London, NMITE was awarded the contract to design and run the Safety Champions in Engineering Education programme for the Royal Academy of Engineering and Lloyds Register Foundation. Throughout 2021 we worked with 18 international participants from sub-Saharan Africa and Southeast Asia to improve safety outcomes for engineering students and professionals in these countries.

"As a Kickstarter working within NMITE's Kickstart team, it has been a pleasure working not only for NMITE but providing support for people who have been in the same position as myself. I have improved and enhanced my skillset and gained a huge amount of confidence within the office style workplace, enhancing my employability. From this I am pleased to have been offered a permanent contract position within NMITE."

Thomas Moore, Partnerships Associate

Transformative
giving



Transformative giving

Philanthropy continues to play an important role at NMITE, and 2021 has been a pivotal year. With the arrival of the Pioneer Cohort, we can finally begin to see the tangible impact of the generous donations we have received over the past few years.

Meet the team: Fundraising



Harriet Dearden
Head of Fundraising
Joined December 2018



Frankie Devereux
Trusts & Foundations Associate
Joined March 2020



Jen Newton
Major Gifts Lead
Joined October 2020



Laura Perratt
Fundraising Associate
Joined June 2019

“The design and integration of unique solutions is a core element of our business and wouldn’t be possible without the innovation, creativity and knowledge of our Engineering Team. Developing this skill set locally is invaluable and it’s great to see Hereford leading the way with the “new model” approach at the core of NMITE. We’re extremely proud to have been able to support NMITE and look forward to working with students on future projects.”

Mike McBride, Technical Director, GRC Ltd

£1.1m of philanthropic support has been given by organisations, individuals and funding bodies in 2021, plus £393,000 of pledges. These transformational gifts have enabled us to provide scholarships and bursaries to our learners, develop our learning spaces and further enhance our academic offering.

Skip to page 52 to see a list of the incredible people who gave to NMITE in 2021

£1,091,889

raised in 2021

£840,457

Trusts & Foundations

£115,000

Major Gifts

£114,689

Organisations

£21,743

Ignition



**THE
IMPACT**

of your support



£773,792

For the development of the Centre for Advanced Timber Technology



£152,529

To provide scholarships and bursaries for our future engineers



£83,027

To enhance our learning spaces and resources



£8,407

Towards significant bursary funding for the Pioneer Cohort



£74,135

Allocated to the areas of greatest need

Be the ignition

Every donation we receive is valuable, no matter how large or small. We launched our Individual Giving Programme, Ignition, in 2021 to give more people the opportunity to support NMITE financially. It is now easy to make a regular or one-off gift to NMITE online, either through Direct Debit, standing order or card payment.

You can join Ignition by visiting our website:

[Click here to find out more](#)

“This country is crying out for engineers, so any donations are important no matter how small. I hope that my gifts will help someone to develop their engineering skills.”

David Furnival, member of NMITE Ignition



We were delighted to receive a Payroll Giving Platinum Award, recognising NMITE's commendable internal culture of philanthropy. We are proud that half of NMITE's staff team make a regular donation to NMITE and other charities through our Payroll Giving scheme.



Opening up opportunities

Our Community of Scholarships programme was launched in 2021. By sponsoring scholarships, individuals and businesses can empower potential learners who face barriers to continuing their education and would not otherwise consider engineering. So far we have secured over £285,500 to provide scholarships and bursaries.

With thanks to our corporate scholarship sponsors Schaeffler (UK) Ltd, Kirintec, Simple Design Works and Safeguard Medical.

SCHAEFFLER



simple
design
works



SAFEGUARD
MEDICAL

“Schaeffler are so pleased to be partnering with NMITE. Like NMITE we know that practical application is just as important as theoretical, so we look forward to working together to develop rounded engineers.”

Laura McKenzie, UK Communications & Branding Manager, Schaeffler (UK) Ltd

In the spotlight

Following the success of NMITE's virtual events in 2020, the fundraising team has been finding new ways of sharing impact with a wide audience.

In November our Head of Fundraising, Harriet Dearden, and Karen Cairney of Cairney & Company consultancy presented to a continental audience at the Council for Advancement and Support of Education's European Annual Conference. They showcased NMITE's strong culture of philanthropy and radically inclusive environment.

The team launched a new podcast, the NMITE Spotlight, to give followers a behind-the-scenes insight into life at NMITE and reflections on current issues in engineering and education.

Tune in to the NMITE Spotlight:

[Click here to find out more](#)

“The bursary has given me the opportunity to come back to education to retrain in my desired field and transition into engineering. I am hugely grateful to those who have contributed to the Pioneer Fund.”

Kimberley Pickett, member of the Pioneer Cohort



Looking forward



Looking forward

We've reflected on how far we've come over the past year, and now we look forward to the future. 2022 will see us welcome more aspiring engineers, launch compelling new projects, and make an even greater impact in Herefordshire and the UK.

In autumn 2022 we will officially open our Skylon Park Campus, delivering a landmark educational and skills offering and enhancing employability skills through real-world challenges and industrial equipment.

We always endeavour to make our courses accessible to the widest possible range of candidates, including part-time and work-based learners. We will be expanding our educational portfolio in the coming year, including courses on manufacturing engineering, sustainable built environment, engineering project management and Bachelor's level engineering qualifications. We'll be inviting applications in 2022, so watch this space.

We will continue to work in partnership with organisations on the development of the Hereford Skills Foundry, which forms part of Hereford's Stronger Towns Fund bid. NMITE's contribution comprises a city centre based Skills Hub and a vibrant community facility in the South Wye area. For the latter project we are collaborating with Belmont Wanderers Football Club and Growing Local CIC, two brilliant community organisations already making a positive impact in Hereford. We will work together on programmes which enhance skills and bring new investment in shared facilities, benefiting the whole community.

To help inform the South Wye project we have launched a national competition, in partnership with TDUK, Edinburgh Napier University and the Passivhaus Trust, for built environment students to design a sustainable community building which could form the project's central 'hub'.



Meet the team:
The people who
keep the show
on the road



Samantha Lewis

HR Director (People and Culture)
Joined October 2018



Tina Benson

Director of Finance & Strategic Planning
Joined December 2019



Stuart Brisbane

Head of Estates
Joined July 2020



Michelle Durkin

PA to the Chiefs
Joined April 2019



Gemma Morton

Receptionist & Office Administrator
Joined November 2019



Lisa O'Neil

HR Associate
Joined May 2021



Owen Parry

IT Architect
Joined June 2020



Nick Ellicott

Health, Safety & Facilities Manager
Joined November 2019



Graeme Ferguson

IT Technical Lead
Joined December 2020



Paul Guest

Head of IT
Joined December 2019



Steven Haines

Facilities & Estates Support
Joined April 2019



Dominique Phippen

Executive Assistant to the CEO
Joined December 2017



Nina Upcott

Student Finance & Payroll Co-ordinator
Joined September 2019

We continue to grow our property portfolio, ensuring we have a strong city-centre presence and the very best facilities for our students and the community. We are working with a developer to renovate an old retail building at Eign Gate, delivering 71 student rooms as well as community spaces.

Keep up to date with all things NMITE.

[Read our blog](#)

[Listen to the NMITE Spotlight](#)

[Follow us on social media](#)

[Join our newsletter](#)

Now both our Pioneer and Explorer cohorts are on board, we look forward to adding to our student numbers with our Trailblazer Cohort joining us in September 2022



Do you know a future engineer? Applications for our September 2022 intake are now open, with a £2,000 bursary available to all successful applicants.

[Click here to find out more](#)



Meet the trustees



Terence Jagger CBE

Chair of the Board of Trustees

Terence brings extensive experience across public and private sectors in the UK and overseas, including many years in the Ministry of Defence and four years as Chief Executive of Crown Agents. He is Former Chair of the Board of Governors at Bath Spa University.



Martin Hitchin

Vice-Chair

Martin is CEO of REHAU Ltd, a leading worldwide systems and service provider of polymer-based solutions in construction, automotive and industry. He became involved in NMITE in 2014 as part of a founding partner company.



Jon Gorringe

A former Director of Finance at the Universities of Edinburgh, Leicester and Essex, Jon has over 35 years of experience working at a senior level in Higher Education. He has been involved with NMITE since 2012, helping to secure start-up funding from the UK Government.



Rowena Innocent

Rowena has over 30 years of experience leading engineering and scientific teams. She is Group Head of STEM Strategy for Malvern Panalytical, an instrumentation business which is part of the Spectris Group.



Marc Leppard

Marc's 30 year background in risk, corporate governance and compliance includes roles within the Civil Service, the UK's Ministry of Justice and more recently as Global Head of Business Integrity at BP Plc. He has advised on ethics and compliance matters within engineering, such as artificial intelligence and algorithmic trading systems.



Dr Kierann Shah

Dr Shah is a freelance STEM Engagement Project Manager and Science Communicator. Her background is in physics, nanotechnology, and the UK space sector. For nine years she managed the National Space Academy, engaging thousands of young people and teachers in STEM as well as working on skills development for the UK space sector.



Dr Wendy Finlay

Dr Finlay has nearly twenty years' experience of working in higher education, from Russell Group Universities to small, specialist HE providers. She is Independent Director/Trustee of the Office of the Independent Adjudicator for Higher Education, and Vice-Principal of the University College of Estate Management.



Aimee Clark

As Head of Commercial at Octopus Energy Group, Aimee is responsible for bringing new innovations to market to help decarbonise home heating and transport. She is an advocate for social entrepreneurship and has spent several years supporting Enactus, a student-focused social enterprise.



Professor Nicholas Lieven

Professor Lieven is Professor of Aircraft Dynamics at the University of Bristol. Previously, he was the Senior Pro Vice-Chancellor following on from the roles of Pro Vice-Chancellor for Education and International. He was the Founding Director of the AgustaWestland University Technology Centre in Rotorcraft Vibration. He has recently been Chair of the UK Teaching Excellence Framework Panel in Engineering and Technology.

Meet our donors

With thanks to the 70 individuals and organisations who have given to NMITE in 2021:

Mark Fisher
 Martin Hitchin
 Susie Dunkerton James Newby
 Tina Benson Two Farmers Crisps Ltd. Kirintec Ltd.
 Tim Belden Christine's Catering Ltd. Laura Perratt
 Tracy Henning Mark and Kate Edwards Michelle Durkin
 Grace Trust David and Susan Furnival Lauren Fosterjohn
 Karen Usher DL Professor Beverley Gibbs AJ Lowther & Son Ltd.
 Samantha Lewis Edward and Victoria Harley Nicholas Devereux
 AK Industries Ltd. WH Doherty (Holdings) Ltd. Leverhulme Trust
 Anthea Parker Radnor Hills Mineral Water Ltd. Rod and Helen Barker
 Dr Sarah Peers Patrick and Maureen Beauchamp Herefordshire Council
 Clare McCauley Edward Cadbury Charitable Trust Beryl Bikes
 The Rt Hon Jesse Norman and Dame Kate Bingham Rothoblaas (UK) Ltd.
 Jennifer Newton Global RadioData Communications Ltd. Gemma Morton
 Graeme Ferguson Professor Elena Rodriguez-Falcon Harriet Dearden
 Rowena Innocent Hereford Contract Canning Ltd. Terence Jagger CBE
 Jonathan Gorringe Peter Goodhew CBE FREng Schaeffler (UK) Ltd.
 Dominique Phippen Griffith and Sally Holliday Oakleaf Gates Ltd.
 Frankie Devereux Simple Design Works Ltd. Dr David Langley
 Toby Kinnaird Seven anonymous donors Kinetic Six Ltd.
 Sheila Ellison Hichens Charitable Trust Tam Milner
 Joseph Walters Victoria Wegg-Prosser
 Megan Ward Chris and Coline Grover
 David Williams
 Leonie Price

"We have a natural affinity with NMITE. We're both passionate about innovation and ensuring that the next generation of engineers are equipped with the skills to design the future. A vision that can only be achieved through true collaboration between employers and educational establishments."

Kristo Shivachev, Founder, Simple Design Works



SCHAEFFLER





NEW ENGINEERS
FOR A CHANGING WORLD

Find out more at nmite.ac.uk



[nmite_ac](https://twitter.com/nmite_ac)



[nmite](https://www.linkedin.com/company/nmite)



[nmite.ac](https://www.facebook.com/nmite.ac)



[nmite_ac](https://www.instagram.com/nmite_ac)

New Model Institute for Technology
and Engineering (NMITE)
Blackfriars St.
Hereford
HR4 9HS

Company limited by guarantee.
Registration no. 08800142
Registered Charity no. 1176550



Department
for Education



Herefordshire
Tertiary Education Trust
DONORS



Herefordshire
Council

